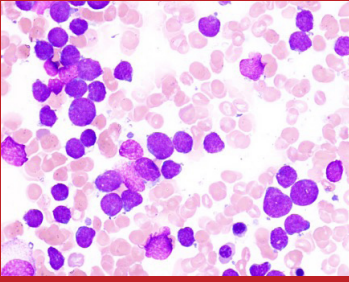


**SH-EA4HP
2027 Workshop**

**SPONSORSHIP
PROSPECTUS**

**October 14-16 | Denver, CO
Westin Denver Downtown**





Workshop Committee

Anamarija Perry, MD
Megan Nakshima, MD
Lauren Smith, MD

Panelists

Amy Chadburn, MD
Elaine Jaffe, MD
Rebecca King, MD
Michael Linden, MD
Megan Nakshima, MD
Yasodha Natkunam, MD, PhD
Anamarija Perry, MD
Lauren Smith, MD
Alexandar Tzankov, MD, PhD
Thomas Tousseyn, MD, PhD

SH-EA4HP 2027 Workshop

Hematolymphoid Disorders Arising in the Setting of Immune Dysregulation

October 14-16, 2027 - Denver, CO, USA

PROGRAM OVERVIEW

The 2027 Society for Hematopathology Workshop will focus on hematolymphoid disorders arising in the setting of immune dysregulation. This comprehensive program aims to elucidate the wide spectrum of hematologic neoplasia linked to immune dysregulation. This will include the evolving landscape of diagnostic challenges brought by therapeutics such as monoclonal antibodies and CAR T-cell therapy. Sessions will explore diagnostic criteria, review newly discovered molecular alterations, and discuss current pathogenic mechanisms influencing these entities.

The workshop will feature a scientific program and diverse group of submitted cases, covering topics like primary immune deficiency-associated pathology, post-transplant lymphoproliferative disorders, complications from iatrogenic immunodeficiency, Epstein-Barr virus-driven lymphoproliferative disease, and somatic mutations in neoplasia.

The workshop is organized by hematopathologists from the University of Michigan and Cleveland Clinic. The invited faculty and speakers include internationally renowned hematopathologists, oncologists, and investigators who will emphasize cutting-edge research, clinical updates, and areas of diagnostic difficulty.

EDUCATIONAL OBJECTIVES

After attending the conference, participants should be able to:

- Understand how to distinguish between lymphomas and lymphoproliferative disorders (LPDs) that arise in the setting of immune dysregulation by using morphology and ancillary testing.
- Recognize lymphoid proliferations that can occur in unusual/novel therapies such as CAR T-cell therapy.
- Review important molecular and scientific advances related to immune dysregulation.
- Appreciate the differences in treatment and prognosis of these various lymphomas/LPDs.

TARGET AUDIENCE

Physicians and other health professionals in hematopathology, pathology, molecular diagnostics, cytogenetics, and hematology/oncology.

ACCREDITATION

AMA PRA Category 1 Credits™ will be offered for this activity.

The Premier Opportunity to Connect with Leaders and Buyers in Hematopathology

The SH-EA4HP 2027 Workshop is the only meeting that connects you with laboratory medicine's full team of key influencers—all of the people you need to reach to meet your goals. It is the single best opportunity to interact directly with your target audiences through one-on-one meetings, product education, and group presentations during exclusive hours.

Please note that all exhibit packages include an in-person exhibit booth.

Exhibit Packages

Exhibit packages are designed based on your feedback to ensure that we offer you the recognition you value most. Our options include the following:

Silver Package \$5,000

- 6' table (tabletop exhibit)
- Logo inclusion in workshop materials

Gold Package \$12,000

- 6' table (tabletop exhibit)
- Logo inclusion in workshop materials
- Workshop Registrations: 4
- 10% off additional sponsorship opportunities

Platinum Package \$15,000

- 2 x 6' table (tabletop exhibit)
- Logo inclusion in workshop materials
- Workshop Registrations: 6
- 15% off additional sponsorship opportunities
- Preferential placement/location in the exhibit area

Diamond Package \$25,000

- 2 x 6' table (tabletop exhibit)
- Logo inclusion in workshop materials
- Workshop Registrations: 8
- 25% off additional sponsorship opportunities
- Preferential placement/location in the exhibit area
- Acknowledgement as a Networking Event Dinner sponsor

Satellite Symposium Lunch or Breakfast \$25,000

- Includes all benefits of a Diamond Package Sponsor.
- Host a breakfast or lunch symposium at the 2027 SH Workshop. These special events are offered during exclusive time slots outside of regular daytime Workshop hours. Pre-show email advertisement is included.
- *Please note that catering costs are the sole responsibility of the sponsor and not included in this sponsorship package.

Gain Additional Visibility with these Sponsorship Opportunities

Wi-Fi Sponsorship \$8,000

Help all conference attendees get connected at the workshop as the Official Wi-Fi sponsor. Your logo will be displayed on the Wi-Fi landing page. Company logo on signage includes Wi-Fi login instruction. Sponsors will also receive recognition in the mobile program.

Workshop Mobile Web App Sponsorship \$8,000

Support the official mobile workshop web app to assist attendees with a convenient way to access the full program of events while onsite at the meeting.

Coffee Breaks Thursday, Friday, or Saturday \$5,000 (each)

You and attendees can recharge and enjoy refreshments and continue to connect. It's the perfect time for you to close sales, confirm qualified leads, and exchange business cards in a setting where your products and services are highlighted.

Lunch on Thursday, Friday \$25,000 (each)

SH luncheons are another perfect opportunity for sponsors to continue networking and brand promotion in a leisurely afternoon setting. This sponsorship includes all benefits of the Diamond Package. Please note that any catering costs accrued are the sole responsibility of the sponsor.

Hotel Room Key \$8,000

Pre-Show Room Drop \$5,000 (each)

Sponsor to print and produce promotional pieces.

Onsite Signage \$1,000-\$10,000

Terms and Conditions

For questions contact info@society-for-hematopathology.org

1. Application and Eligibility. Application for exhibit space must be made on the printed form provided by the Society for Hematopathology and European Association for Hematopathology (hereinafter called "SH-EA4HP"), contain the information requested, and be executed by an individual who has authority to act for the applicant. Exhibit contents will be limited to only the company and product(s) listed on the application, and are subject to approval by SH-EA4HP for accepted and acknowledged efficacy and commercial availability. SH-EA4HP may reject the application of any company whose goods or services are not compatible, in the sole opinion of SH-EA4HP, with the educational character and objectives of the Annual Meeting. In the event an application is not accepted, any paid fees will be returned.

2. Payment Dates. No exhibit space will be guaranteed until SH-EA4HP receives payment accompanied by a signed application.

3. Cancellation. In the event that the exhibitor notifies SH-EA4HP of its intent to cancel the contract after acceptance but prior to August 31, 2027, a full refund of monies received, minus a \$250 administrative fee, will be given. No refunds will be made on cancellations after August 31, 2027. If for any cause beyond the control of SH-EA4HP – such as, but not limited to, the destruction of the meeting/exhibit facilities by an Act of God, the public enemy, authority of the law, fire, or other force majeure – SH-EA4HP is unable to comply with the terms of this contract and deliver the exhibitor benefits described, this contract shall be considered terminated and any payments made hereunder by the exhibitor shall be refunded to the exhibitor, less expenses incurred by SH-EA4HP to the date of the termination allocable to the exhibitors after proration thereof among all exhibitors.

4. Assignment of Sponsorships and Exhibit Space. Sponsorships and exhibit locations will be assigned according to the date on which the contract and payment are received. In regard to exhibitors, SH-EA4HP reserves the right to assign space other than the choice requested, if necessary, and the right to rearrange the floor plan and/or relocate any exhibit. Exhibitors who change the size of their booth space are not guaranteed the original location and may be subject to relocation by Show Management.

5. Exhibit Booth and Furnishings. SH-EA4HP will provide one 6' table, two chairs. Exhibits must conform to the contracted space and not project so as to obstruct the view of the adjacent booths. Exceeding allotted space may incur additional charges or result in required removal of excess items. Additional exhibitor services are available at normal charges through the Official Contractor.

6. Special Visual and Sound Effects. Audiovisual and other sound and attention-getting devices and effects will be permitted only in those locations in such intensity as in the sole opinion of SH-EA4HP does not interfere with the activities of neighboring exhibitors. Operation of equipment being demonstrated may not create noise levels objectionable to neighboring exhibitors.

7. Exhibit Services. Exhibitors shall employ only union labor, as made available by the Official Contractor for the installation or dismantling of exhibits, when required by union agreements. The Official Contractor will have control of all inbound and outbound freight to prevent congestion in the loading and unloading area, in the aisles and in any freight traffic area. An exhibitor using an outside contractor for the above work should employ only union display companies and must notify Show Management no later than 30 days prior to the exhibition. The Official Contractor will have complete control of all labor hired and scheduling and coordination of labor for the purpose of the orderly setup, management, and dismantling of the exposition.

8. Hospitality and Entertainment. Hospitality suites or events sponsored by the exhibitors must be approved by SH-EA4HP. No entertainment may be scheduled to conflict with SH-EA4HP's program hours, activity hours, or exhibit hours.

9. Insuring Exhibits. Exhibitors are encouraged to insure their exhibits, merchandise, and display materials against theft, fire, etc., at their own expense. It is suggested by SH-EA4HP that the exhibitor contact the exhibitor's insurance broker and obtain all-risk insurance covering exhibit property while absent from home premises for exhibit purposes, or a rider to the exhibitor's existing policy covering same. Neither the exhibit facility, SH-EA4HP nor the Official Contractor will be responsible for loss or damage to any property in storage, in transit to or from the exhibit building, or while in the exhibit building for any loss of income as a result of any reduced sales due to loss or damage. All property of the exhibitor will be deemed to remain under the exhibitor's custody and control in storage, in transit to or from, or within the confines of the exhibit hall, even though it may at times be under the temporary control or direction of SH-EA4HP or the Official Contractor.

10. Liability for Damages or Loss of Property. Guard service is provided by SH-EA4HP on a 24-hour basis from move-in through move-out. Notwithstanding the guard service provided by SH-EA4HP for purposes of general security in the exposition premises, the exhibitor shall protect, indemnify, and hold harmless SH-EA4HP, the exhibiting facility, and the Official Contractor and their respective employees and agents from any and all liability, loss, damage, or expense by reason of any injury or injuries sustained by any persons or property or loss of property or income that might be derived therefrom occurring in or about the exposition premises or entrances thereto or exits therefrom, including that caused by or resulting from the negligence of SH-EA4HP. The exhibiting facility shall not be responsible or liable for any injury, loss, or damage to any property or person brought in by the exhibitor or otherwise located in the exhibition premises.

11. Shipping Instructions. Information on shipping methods and rates will be sent to each exhibitor by the Official Contractor. The exhibitor will ship, at his own risk and expense, all articles to be exhibited. The Official Contractor will provide storage for incoming freight, delivery to the booth, and removal, storage and return of empty crates, and removal and shipment of outbound freight. All charges are based on inbound weights. All shipments must be prepaid. The address on all crated shipments shall include the exhibitor's name and booth number(s).

12. Miscellaneous. SH-EA4HP shall have the sole authority to interpret and enforce all terms and conditions governing exhibitors and this meeting. Any and all matters not specifically covered herein are subject to decision by SH-EA4HP. These terms and conditions may be amended at any time by SH-EA4HP upon written notice to all exhibitors. The exhibitor expressly agrees to be bound by the terms and conditions set forth herein and by any amendments thereto adopted by SH-EA4HP from time to time. This contract shall be interpreted under the laws of the United States and the State of Illinois.